



# MONTHLY MEMBERSHIP PROGRESS REPORT

Results as of: 2/28/2015

Multiple District 12

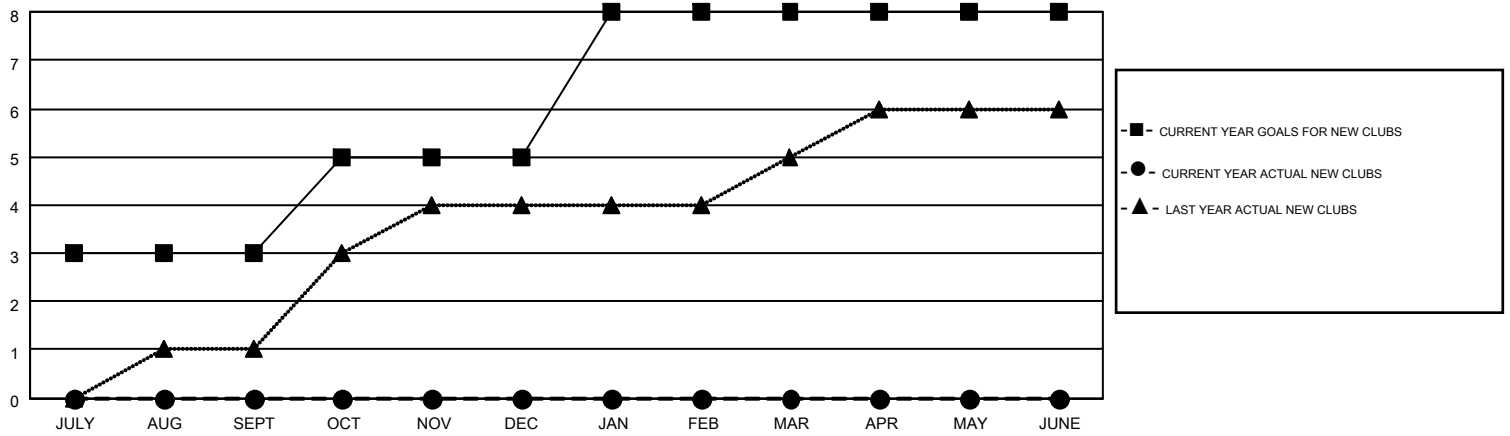
LOCATION: TENNESSEE

GMT: CARL HARRELL

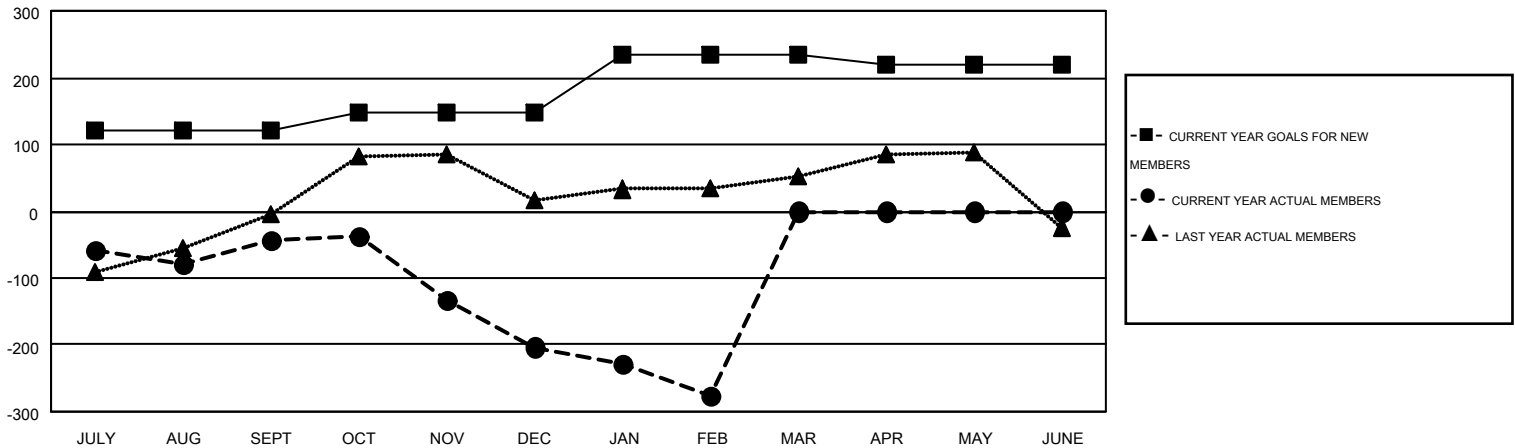
GMT CA 1

Clubs					Members				
RESULTS FOR 2014-2015					RESULTS FOR 2014-2015				
QUARTER	NEW CLUB GOAL	NEW CLUBS	DROPPED CLUBS	NET GAIN/LOSS	QUARTER	NEW MEMBER GOAL	CHARTER AND NEW MEMBERS ADDED	DROPPED MEMBERS	NET GAIN/LOSS
JULY/AUG/SEPT	3	0	0	0	JULY/AUG/SEPT	120	171	213	-42
OCT/NOV/DEC	2	0	1	-1	OCT/NOV/DEC	28	131	292	-161
JAN/FEB/MAR	3	0	0	0	JAN/FEB/MAR	86	87	160	-73
APR/MAY/JUNE	0	0	0	0	APR/MAY/JUNE	-14	0	0	0

GOALS AND ACTUAL NEW CLUBS CUMULATIVE



GOALS AND ACTUAL MEMBERS CUMULATIVE



DROPPED CLUBS: 1	110 CLUBS OF 216 ADDED 1 OR MORE NEW MEMBERS	<u>GENDER DISTRIBUTION</u>	
		MALE	3,429 (65.64%)
		FEMALE	1,795 (34.36%)
<u>DROPPED MEMBERS</u>		<u>FAMILY UNIT MEMBERS</u> 1,095	
DECEASED	58	HEAD OF HOUSEHOLD	541
CLUB CANCELLED	0	NON-HEAD OF HOUSEHOLD	554
OTHER	607		
TOTAL	665		

[CLICK HERE FOR HEALTH ASSESSMENT DATA](#)